



PLAINTEC

BUILDING YOUR PROJECTS



PLAINTEC WAS BORN IN 1999, THE RESULT OF THE CONCERN OF A GROUP OF YOUNG TECHNICIANS, WITH THE AIM OF OFFERING NEW SOLUTIONS AND WORKING METHODS TO A MATURE SECTOR SUCH AS THE CONSTRUCTION INDUSTRY.

1999

BIRTH

2006

**OFFICE
IN TUI**

2019

**PORTO OFFICE
OPENING**

2020

**NEW CORPORATE
HEADQUARTERS
IN TUI**

ABOUT PLAINTEC

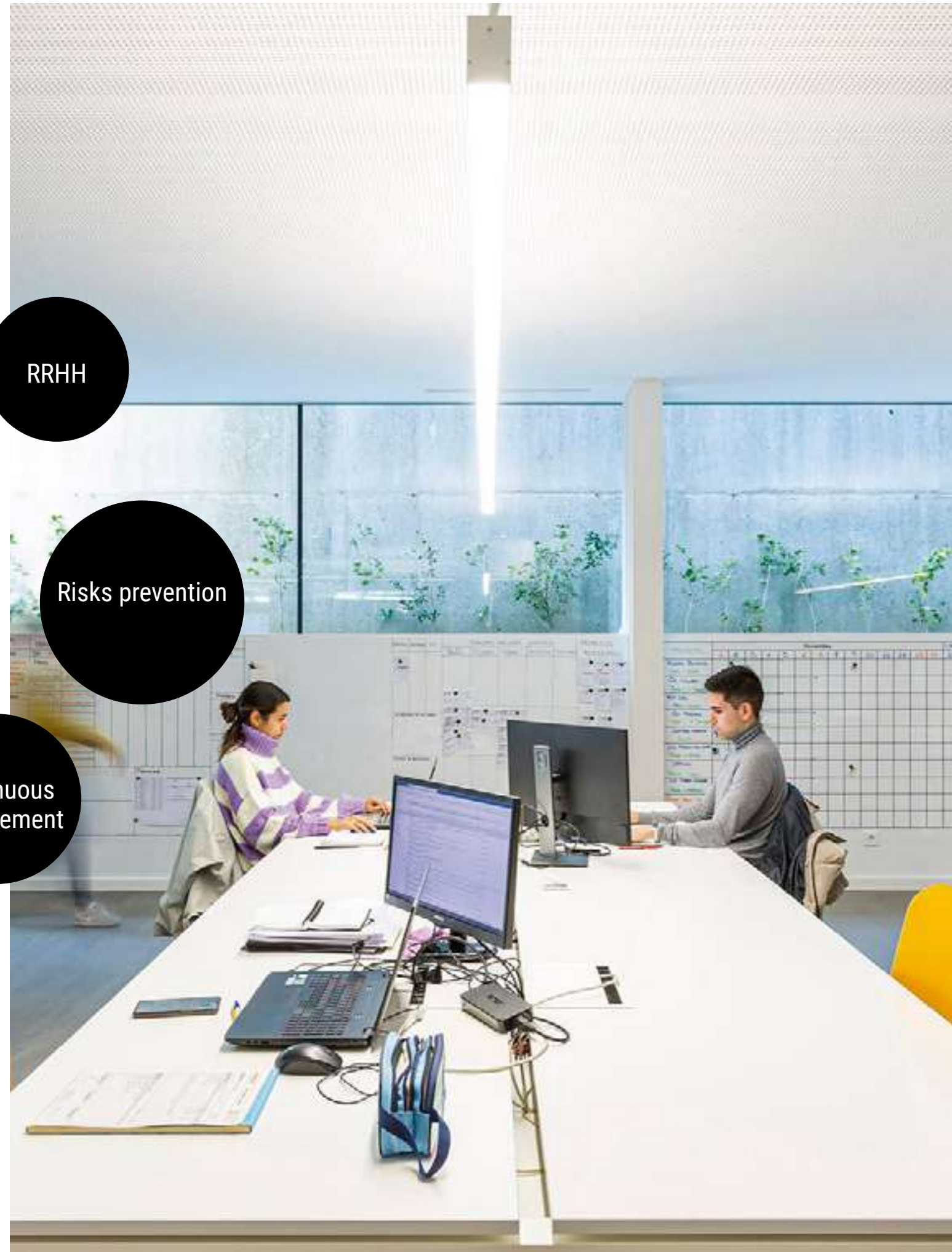


**WE WORK WITH EFFICIENCY,
COMMITMENT TO OUR CUSTOMERS
AND RESPECT FOR MATERIALS,
THE ENVIRONMENT AND SOCIETY,
PROVIDING A VALUE ADDED TO EACH
SPACE.**

We respond to the most modern construction needs with efficient and sustainable solutions in any type of work, both in new works and in rehabilitation works. Specialists in industrial warehouses, Contract channel (hotel sector, catering, offices), retail, residential buildings and public works. We prioritise personalised attention to all our customers.



WE HAVE A MULTIDISCIPLINARY, QUALIFIED AND DYNAMIC TEAM



Technical office
Projects

RRHH

Studies

Business
Development

Risks prevention

Management
Shopping

Continuous
Improvement

Quality and
Environment

OUR STRONG POINT

**WE ARE COMMITTED TO
ACHIEVING MAXIMUM CUSTOMER
SATISFACTION, BUILDING TRUST THAT
LASTS BEYOND THE PROJECT.**

We have the most advanced control, design and management tools to optimize the performance of resources. With personalized service and our Lean Construction work philosophy, we offer our customers a firm commitment to meeting deadlines.

COMMITTED TO CONTINUOUS IMPROVEMENT

QUALITY AND ENVIRONMENT CERTIFICATE

PLAINTEC has implemented an Integrated Management System for Quality, Environment and Occupational Health and Safety based on the international standards UNE-EN ISO 9001, UNE-EN ISO 14001 and UNE-EN ISO 45001.

This allows us to influence the continuous improvement that we have always tried to maintain, and the fulfillment of all our objectives, as well as developing a high environmental responsibility, commitment to sustainability in the industrial field and reflecting our activity as safe and healthy, in order to last to improve the service that PLAINTEC provides to all its clients as well as to prevent accidents at work and health problems of our workers.



We focus on the Integrated Quality and Environment Management System as a way of organizing the operation of our business group, basing it on basic pillars such as Service Quality and its Processes.



CONSOLIDATE WITHIN THE COMPANY CULTURE THE REAL AND EFFECTIVE EQUALITY OF OPPORTUNITIES BETWEEN ALL PEOPLE.

This comprises us in our way of working, from selection to promotion, through salary policy, training, working and employment conditions, occupational health, organization of working time and conciliation, formally consolidating the principle of equality that we have already been applying in our company.

EQUALITY PLAN

At Plaintiff we promote the implementation of our Equality Plan, as a principle that governs all our actions with a transversal nature.

UGT FICA, CCOO and CIG accompany us in this work as the most representative unions in the sector at the regional level, not only in the collective bargaining process of the Equality Plan, as established by Organic Law 3/2007 for effective equality between women and men, but throughout the process of development and evaluation of equality measures.



PROJECTS

ALWAYS AT THE FOREFRONT OF THE LATEST TECHNOLOGIES AND MATERIALS

We apply the management philosophy of Lean Construction construction processes, to meet the needs of our customers both in terms of deadlines and quality.



INDUSTRY



CONTRACT

Hotel sector, catering, offices



RETAIL

Fashion, supermarkets, banking, clinics, day centers and residences.



RESIDENTIAL BUILDINGS



PUBLIC WORKS

ORPAGU

Location

Tui (Spain)

+info

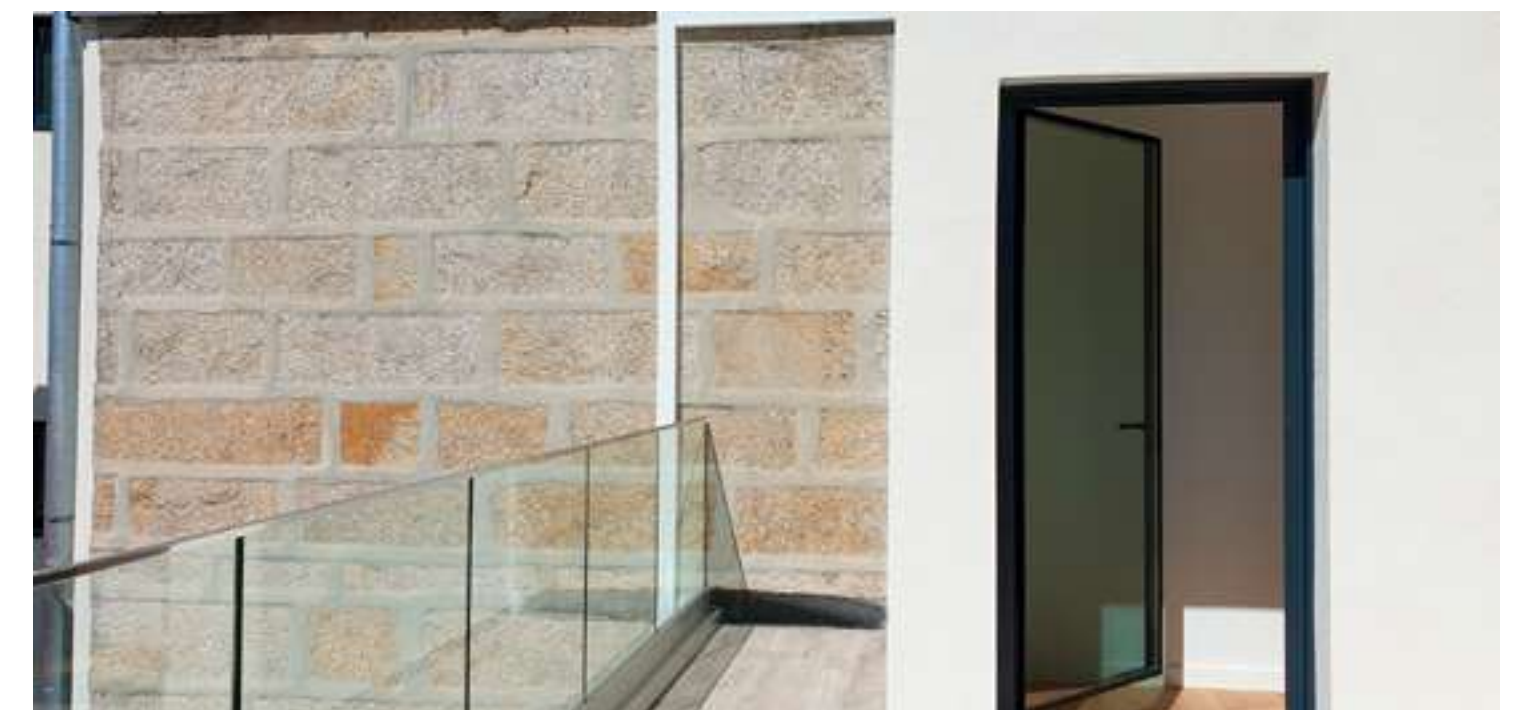
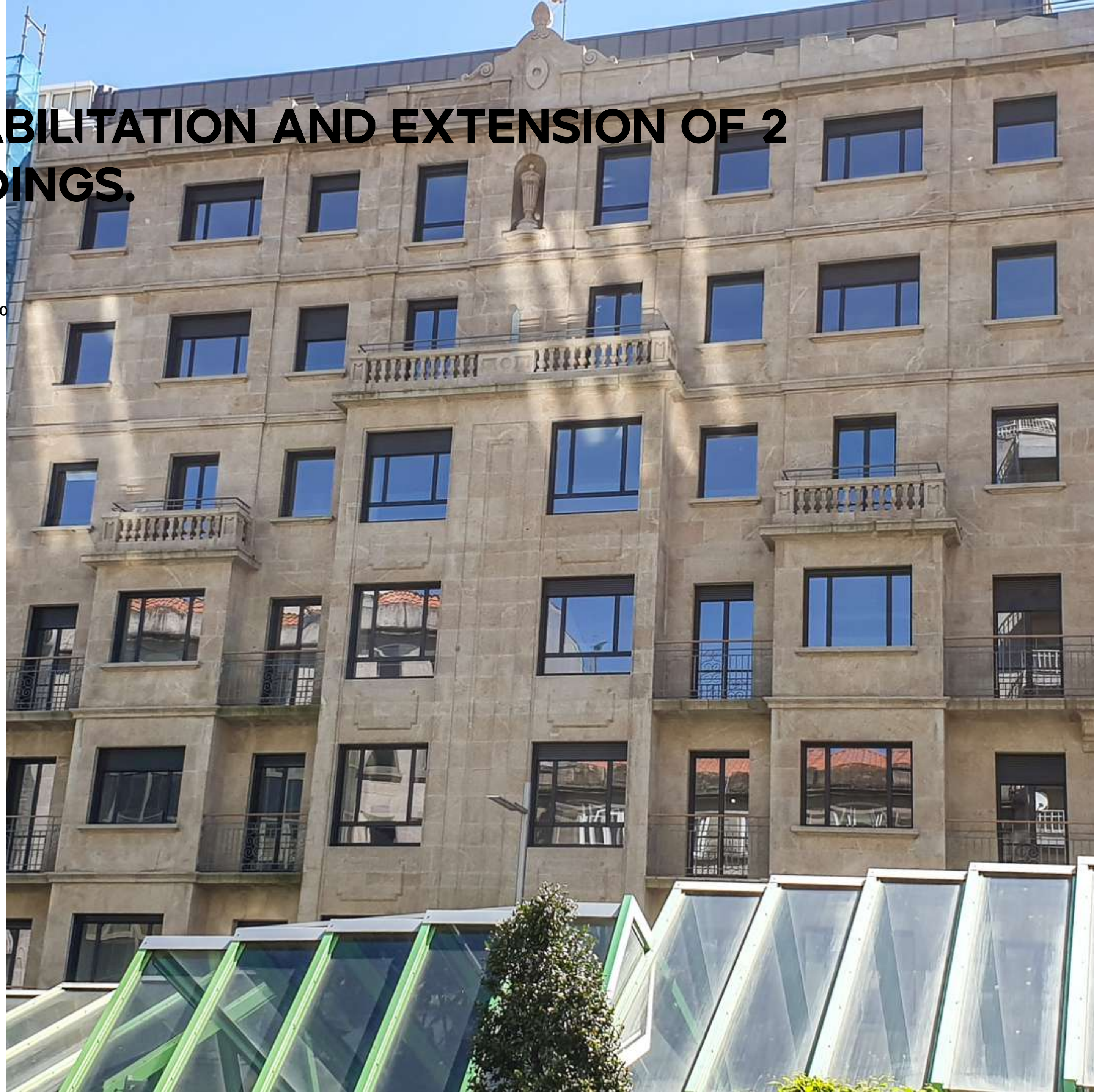


REHABILITATION AND EXTENSION OF 2 BUILDINGS.

Location

Gran Vía 19 y
Guatemala 01,Vigo
(Spain)

+INFO



HOME RENOVATION DOMO

Location
Vigo (Spain)

+INFO

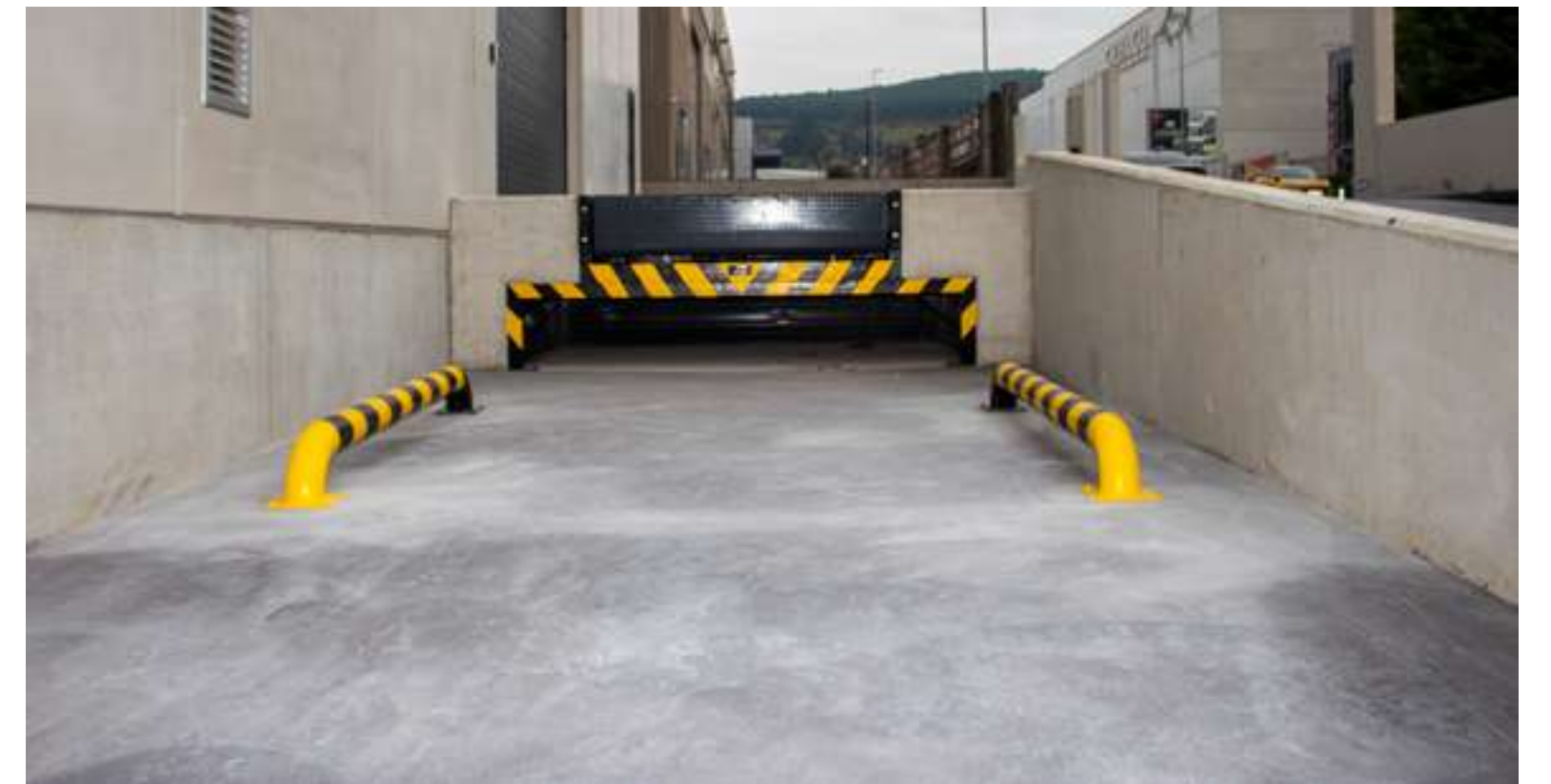


INDUSTRIAL BUILDING MEWA

Location

Tui
(Spain)

+info



PARK HYATT HOTEL

Location
Mallorca
(Spain)

+info



EL CORTE INGLÉS

Location

Lisboa (Portugal)

+info



GOIKO GRILL

Location

Vigo
(Spain)

+info



SANTAGLORIA COFFEE AND BAKERY

Location
Oporto
(Portugal)
+info



RESTAURANTE GIRAFFE

Location
Malaga airport
+info



STARBUCKS

Location

Oporto
(Portugal)

+info

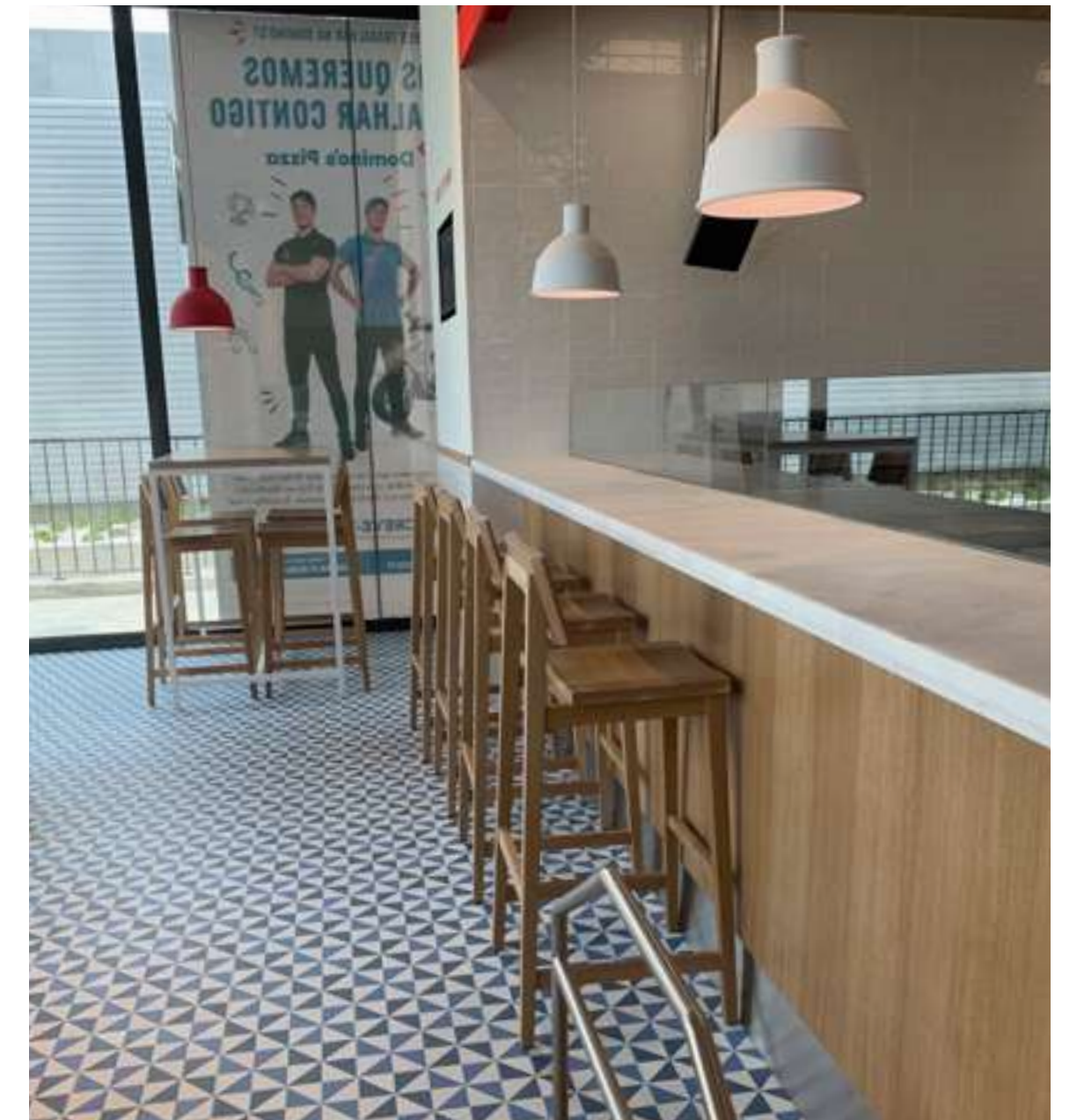


DOMINO'S PIZZA

Location

Braga
(Portugal)

[+info](#)



BURGER KING

Various locations
Spain and Portugal
+info



NOTARÍA PÉREZ BREY

Location
Noia (Spain)

+INFO



CAIXABANK

Location

Getafe, Madrid
(Spain)

+INFO

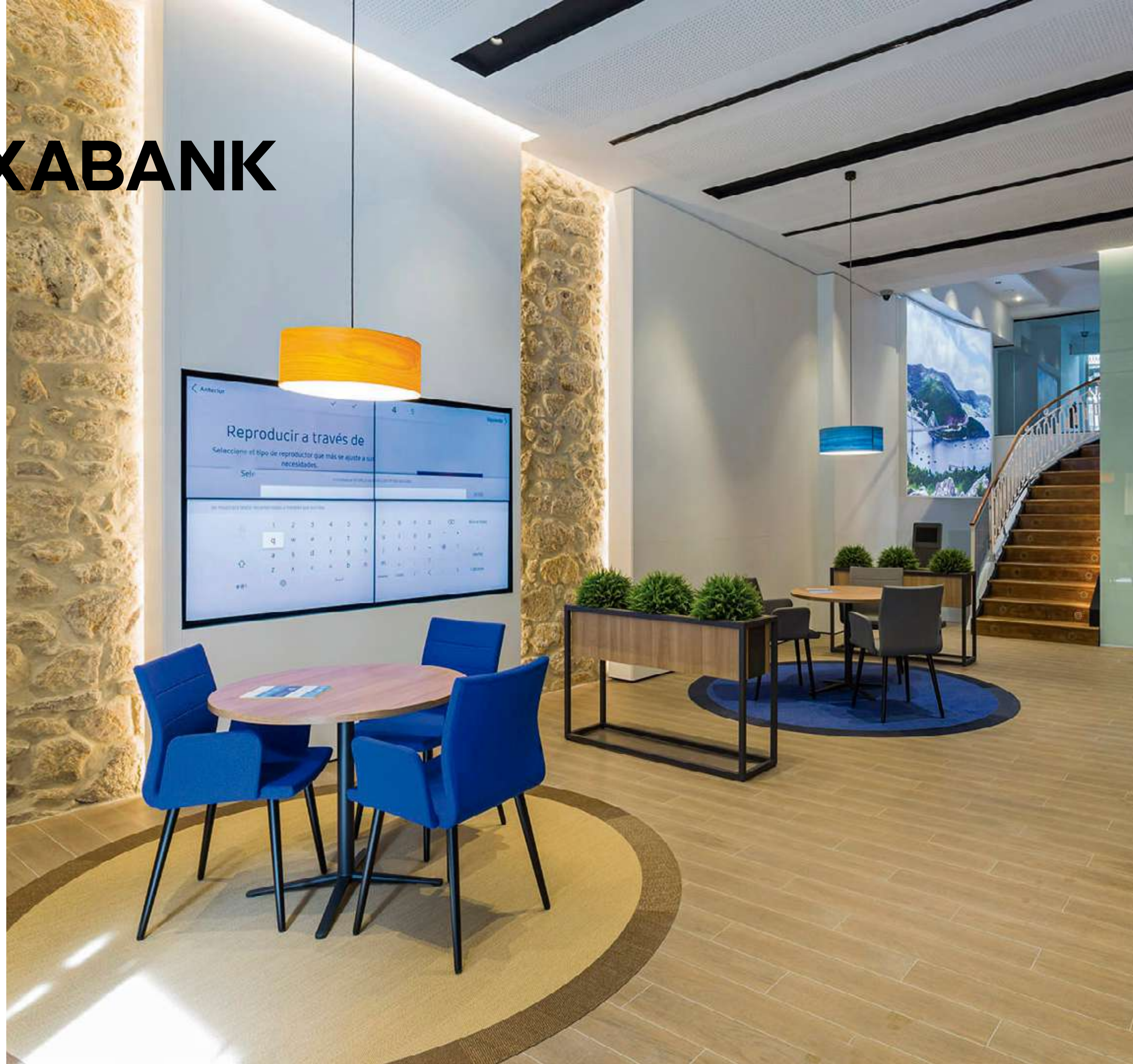


CAIXABANK

Location

Vigo (Spain)

+info



OFFICES

Location

Tui (Spain)

+info



FREIRE OFFICES

Location
Vigo (Spain)

+info



CLÍNICA BAVIERA

Location

Vigo
(Spain)

[+INFO](#)

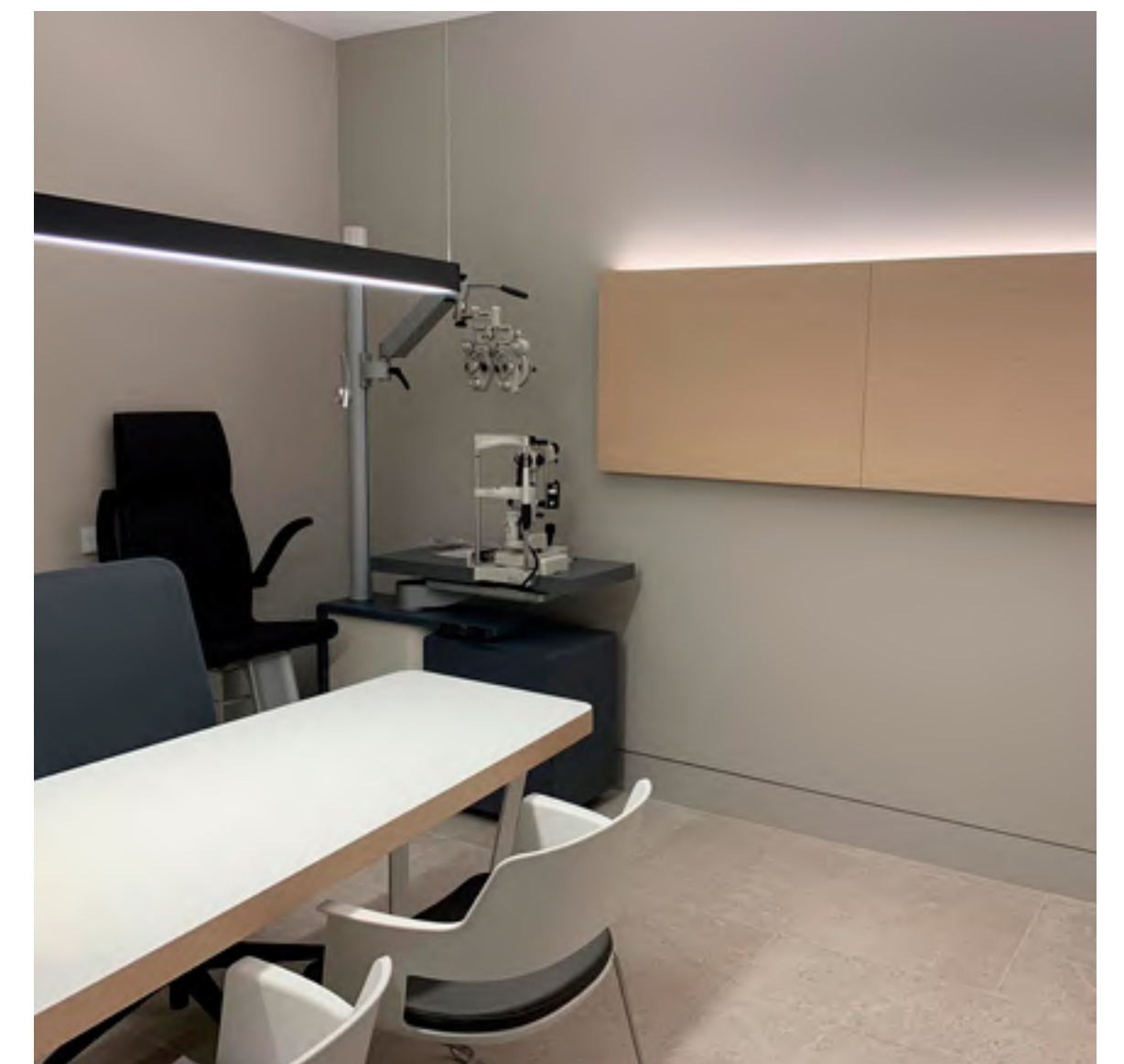


BAVIERA CLINIC

Location

Málaga
(Spain)

+info



BIG SURFACES

Lidl
Mercadona



ZARA WOMAN

Location

Lugo
(Spain)

+info



ZARA MAN

Location

Lugo
(Spain)

+info

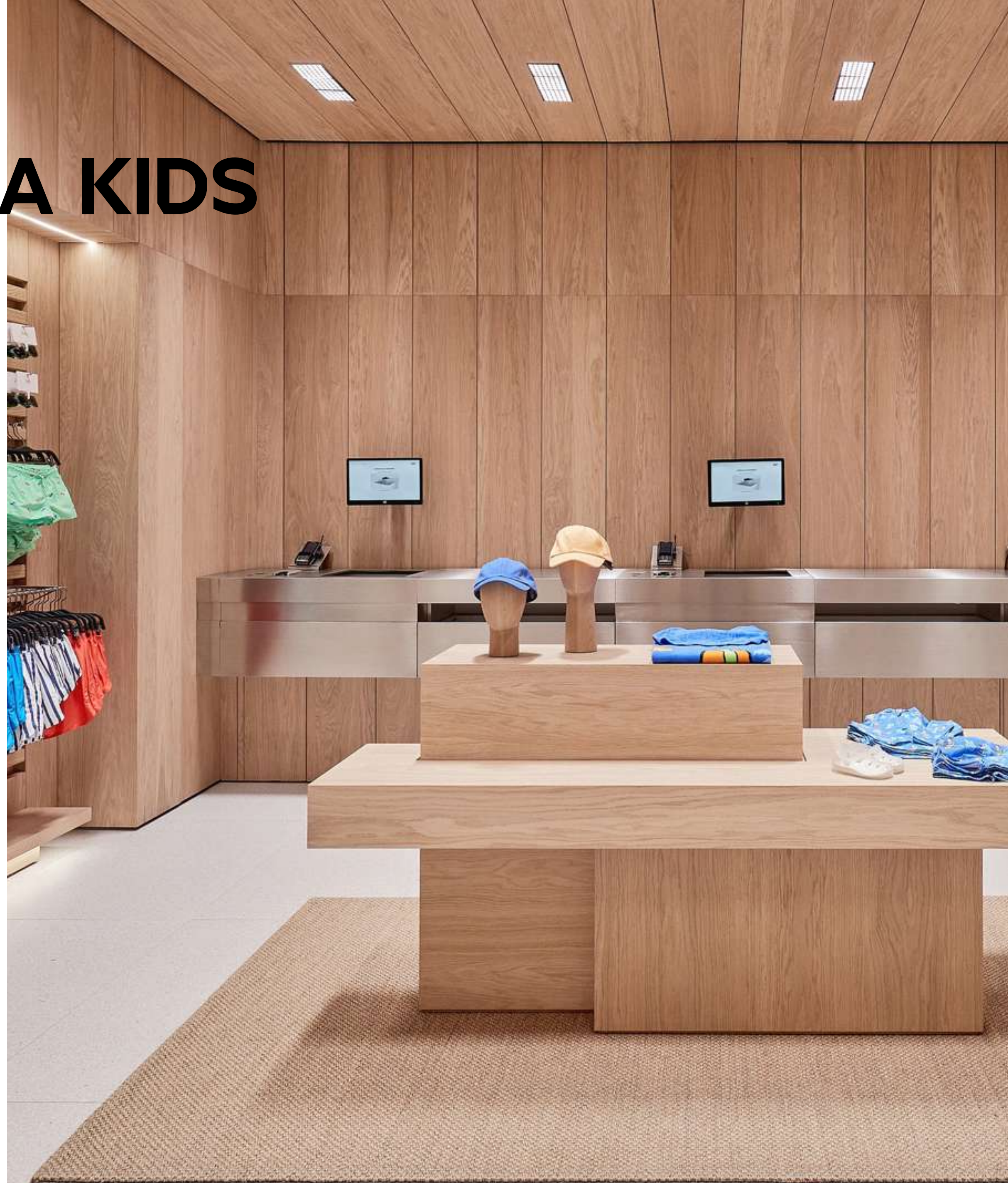


ZARA KIDS

Location

Lugo
(Spain)

+info



ZARA

Location

Sevilla (Spain)

+info



ZARA HOME

Location

Pontevedra

(Spain)

+info

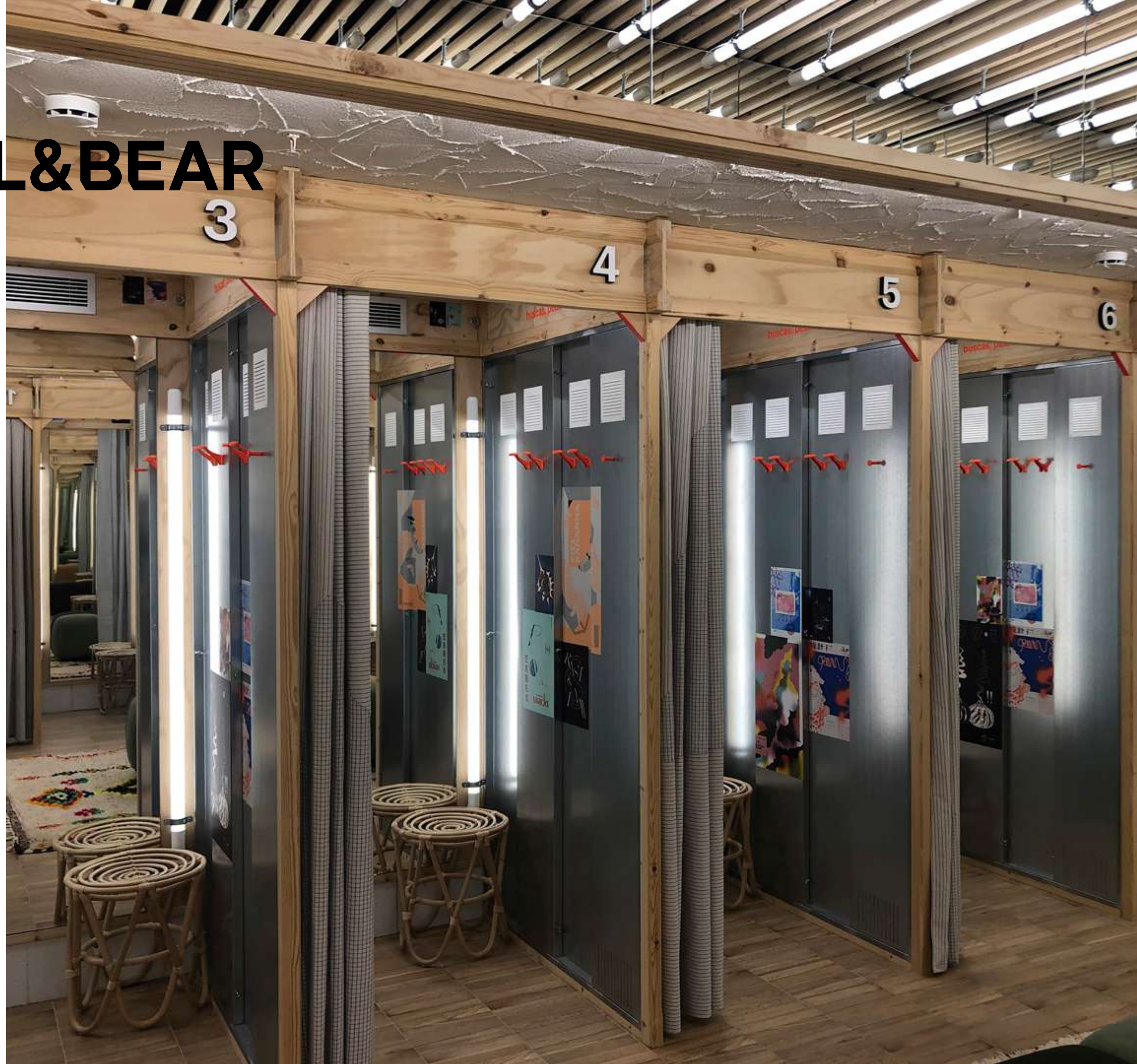


PULL&BEAR

Location

Vigo (Spain)

+info



BIMBA Y LOLA

Location

Lisboa (Portugal)

+info



AMORALIA

Location

Tui (Spain)

+info



COGAMI

Location

Santiago de
Compostela
(Spain)

+info



REHABILITACIÓN

Location

Vigo (Spain)

+info

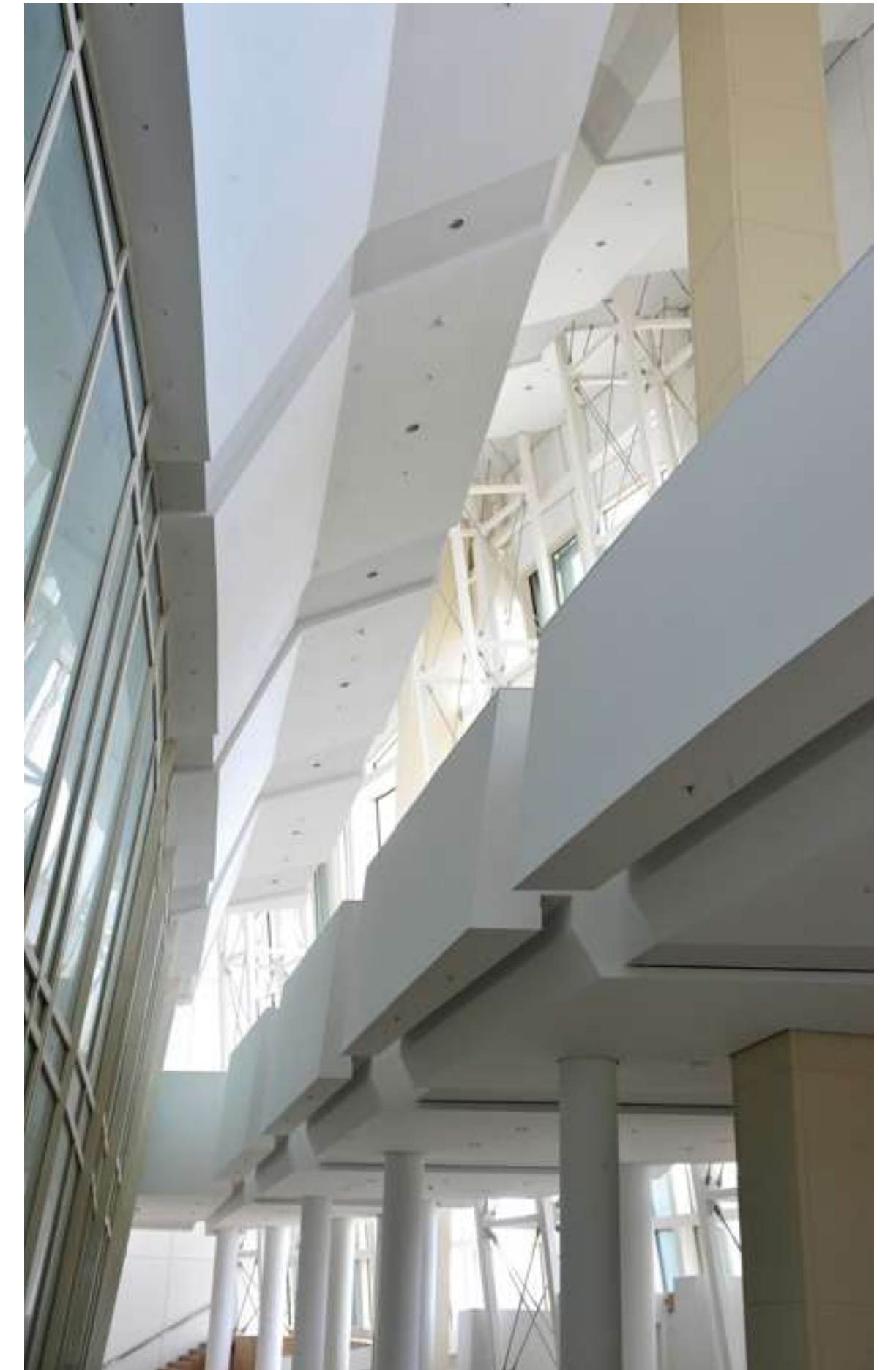


CIDADE DA CULTURA

Location

Santiago de
Compostela
(Spain)

+info



ACKNOWLEDGMENTS

VII GOLDEN GYPSUM TROPHY

Category Yeso Laminated Board. Winner

SANT - GOBAIN GYPROC TROPHY 2010

2010 - PLASTERBOARD CATEGORY WINNER

City of Culture Santiago de Compostela

ARDÁN COMPANY OF HIGH PRODUCTIVITY 2017

Consortium of Vigo

ARDÁN WELL MANAGED COMPANY 2017/2019/2020/2021

Consortium of Vigo

PONTEVEDRA PYME AWARD 2019

Chamber of Commerce

EMPRESA TITULAR DE ALVARÁ DE EMPREITEIRO DE OBRAS PÚBLICAS

INTERNACIO- NALIZACIÓN

Nuestra capacidad de movilidad geográfica hace que muchos clientes depositen su confianza en nosotros para la ejecución de numerosos proyectos por todo el mundo.

Europa: Islandia, Francia, Irlanda, Hungría, Inglaterra, Bélgica, Polonia, Suiza, Holanda, Dinamarca, Italia y Portugal son de nuestros mercados más importantes.
América: Panamá y EEUU.

SOME OF OUR CUSTOMERS

//ABANCA

aelca ▶



CENTRO DE DÍA
•amorajia•

BIMBA Y LOLA



CaixaBank

CLINICA
BAVIERA

COCEMFE

COGAMI
CONFEDERACIÓN GALLEGA
DE PERSONAS CON DISCAPACIDADE

CONCELLO
DE VIGO

Domino's

El Corte Inglés

FREIRE
SHIPYARD

FRIALIA

GIRAFÉ

H&M

HOSPITAL
ÁLVARO
CUNQUEIRO

ikos
RESORTS

Instituto
Cervantes

INDITEX

Bershka lefties OYSHO
PULL&BEAR Stradivarius ZARA

KIABI



Lonza

MANGO



MERCADONA

MUTUAMADRILEÑA

new balance

OR.PA.GU.

RELAY

RHG RADISSON
HOTEL GROUP

(Sfera)



ulanka

VITALDENT

XUNTA DE GALICIA
CONSELLERÍA DE EDUCACIÓN, UNIVERSIDADE
E FORMACIÓN PROFESIONAL

PLAINTEC

BUILDING YOUR PROJECTS



THANKS

+34 986 621 397

info@plaintec.com

SPAIN DELEGATION

Parque Empresarial Areas, c/i nº18
36711 Tui, Pontevedra

PORTUGAL DELEGATION

Rua da Paz 66, loja 13
4050-46 Porto
+351 226 090 759
geral@plaintec.com

